

Semi-automatic hydraulic head band saw

MLI – 01 HYDRAULIC

Is modern, highly productive and environmentally friendly equipment for wood processing mined materials cut to :

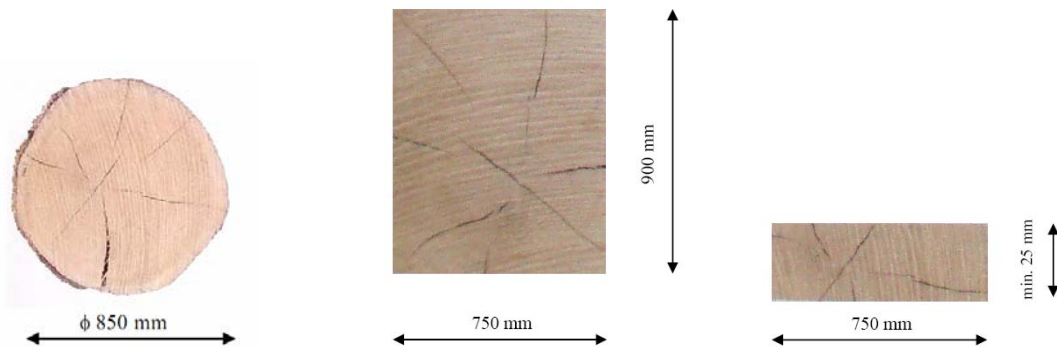
- **Half balks**
- **Prisms**
- **Planks**

Output 7 – 10 m³ for 8 hours

The saw is equipped with electrically operated trolley in the horizontal and vertical directions which is continuously adjustable in range **0-40/ min.**



Saw belt **80 x 1,1 – 5310 mm**, with a peripheral speed of **35 m/s** is placed on impellers ϕ **800 mm** with hydraulic tension.



Basic version is intended for the trunk with a maximum diameter of **850 mm**.

The maximum length for the cutting of standard designs is 6,5 m and 9 m

The device is equipped with hydraulics for:

- Clamping trunks
- Hydraulic operated head
- Turning and holding
- Balancing degree of taper



Head band saw can be equipped with:

- Equipment for handling the trunk
- Transferring version
- Electronic cutting height adjustment
- Mechanical manipulation of the trunk (without hydraulic equipment)
- Pre-cutting device



Device work-and-tumble with pressure



Pre-cutting device



Leveling device with fixturing